

APPENDIX B: VIEW ANALYSIS

MG2 Corporation
1101 Second Ave., Ste 100
Seattle, WA 98101

206 962 6500
MG2.com

March 30, 2018

Mr. Brian Ward
Director
Muckleshoot Indian Tribe
39015 172nd Avenue SE
Auburn, WA 98092-9763

**RE: Salish Expansion Lodge & Spa Expansion View Analysis
Snoqualmie, WA
Project Number: 18-5009-01A**

Dear Brian:

MG2 performed a comprehensive analysis of potential view impacts from the Salish Lodge & Spa Expansion on the Falls Park viewshed, across SR 202. In summary, our findings are that no portion of the project, upon completion, will be viewable from vantage points within the Falls Park.

This analysis identified two locations within the Falls Park as the most critical in evaluating any potential view impacts. The first location, Viewpoint #1, is the Falls Park walkway, immediately upon entering the Park, just west of the pedestrian bridge over SR 202. This location is approximately 460 feet above sea level. The second location, Viewpoint #2, is the Snoqualmie Falls observation deck within the Park. This location is approximately 450 feet above sea level.

The analysis was conducted using a drone, launched from specified points on the site as they relate to the hotel at build out. On March 12, 2018, the drone was launched to various elevations with outside observers at the identified viewpoints within the Falls Park. The at grade elevations of the hotel site range approximately from a high of 538 feet to a low of 526, a relatively flat area. The drones were launched from a grade elevation of about 530 feet, in two separate locations, for purposes of this view analysis. The hotel elevations will range from 24 to 55 feet. Therefore, the view analysis was focused on determining what could be seen at 55 feet above the base launching level from the viewpoints at the Falls Park.

The drone was launched from or near these key points on the site:

- **Launch Point #1**
At the southern-most edge of the proposed Phase 3 hotel rooms wing, near the existing garden apiary
- **Launch Point #2**
At the westerly edge, adjacent to the proposed event space structures of the hotel



As the photos in the View Analysis show, the drone was not visible at 55 feet above the launch point from Viewpoint #1 near the pedestrian bridge. It was only visible once reaching 100 feet. It was never visible from the Falls Park Observation Deck, Viewpoint #2, even at 100 feet above launch point. Since the tallest structure on the site is proposed at 55 feet, no buildings will be visible from within Falls Park at project completion. It is anticipated that portions of the hotel will be visible from the Salish Lodge & Spa, which is planned.

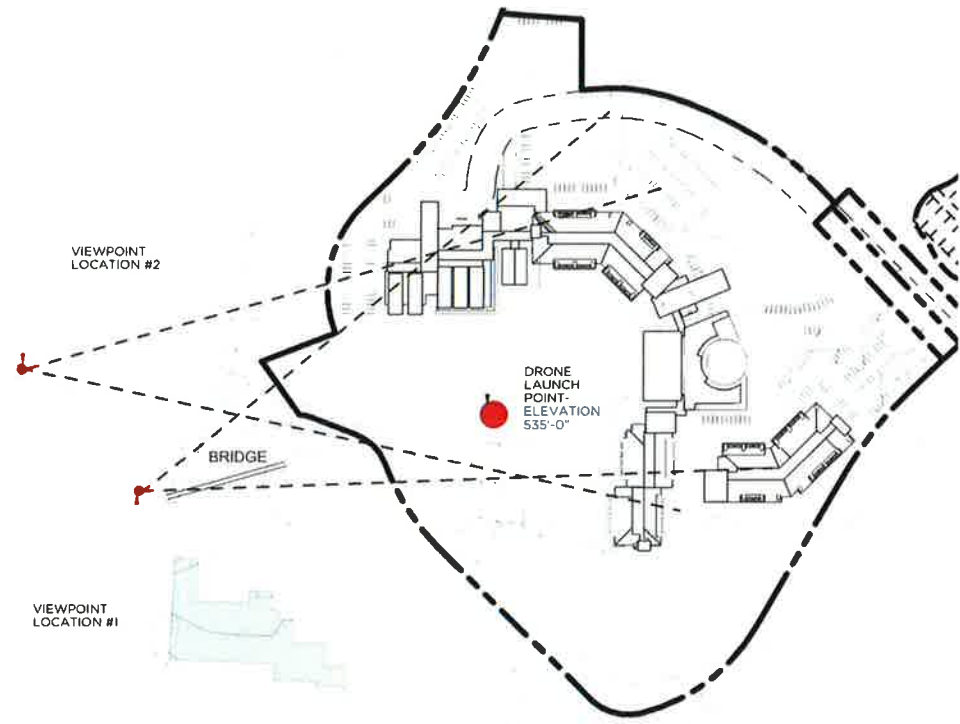
The residential site is higher in elevation but farther away from the identified **viewpoints**. The distance from the Falls Park, coupled with the elevations will make it impossible to see any of the residential development from these vantage points.

Should you require any additional information regarding this matter, please contact me directly at (206) 962-6462.

Sincerely,

A handwritten signature in black ink, appearing to read "Ron Mitchell". The signature is fluid and cursive, with a long horizontal stroke extending to the left.

Ron Mitchell, AIA
Principal



VIEWPOINT REFERENCE PLAN
SCALE: 1" = 160'-0"



VIEWPOINT LOCATION #1, DRONE STATIONED AT 55'-0" ABOVE LAUNCH POINT (AT TOP OF PROPOSED ROOF). NOT VISIBLE.



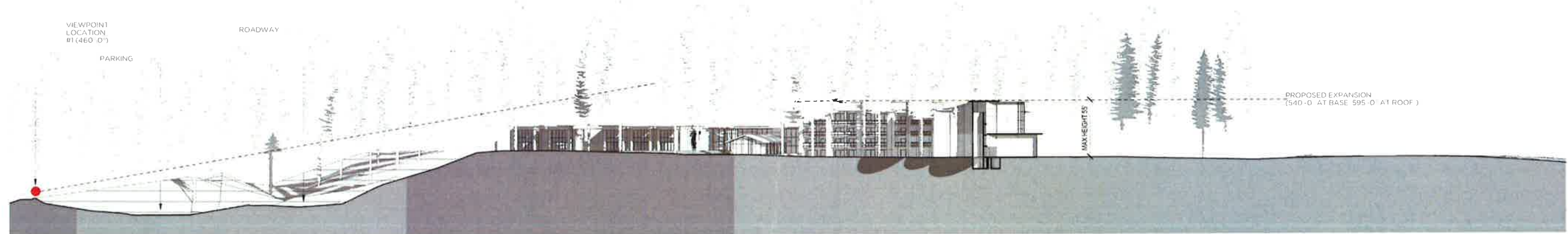
VIEWPOINT LOCATION #1, DRONE STATIONED AT 100'-0" ABOVE LAUNCH POINT. NOT VISIBLE.



VIEWPOINT LOCATION #2, DRONE STATIONED AT 55'-0" ABOVE LAUNCH POINT (AT TOP OF PROPOSED ROOF). NOT VISIBLE.



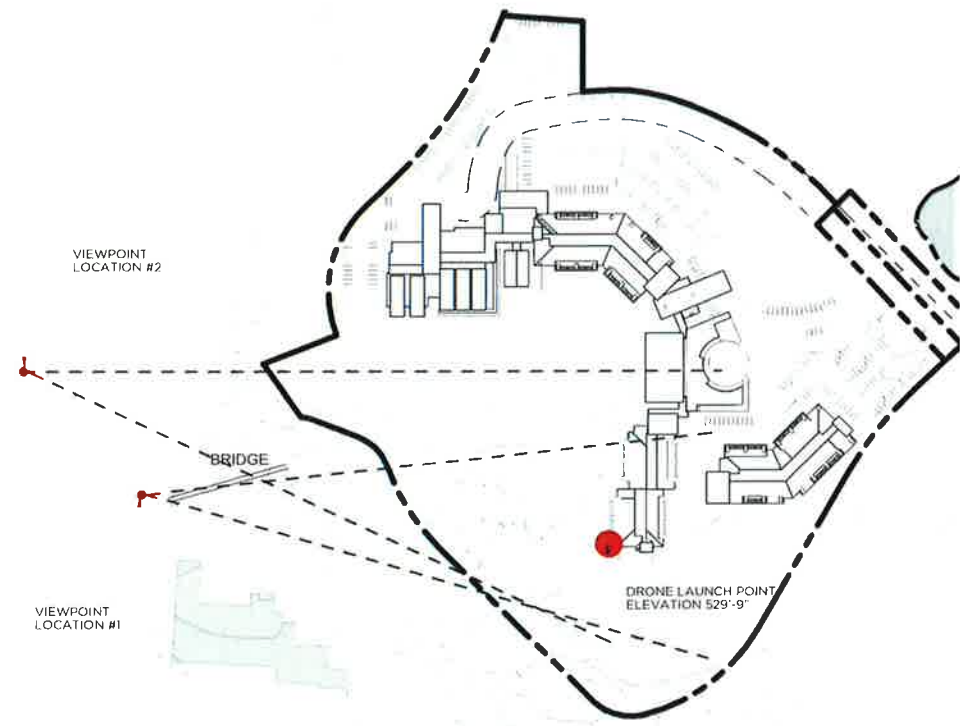
VIEWPOINT LOCATION #2, DRONE STATIONED AT 100'-0" ABOVE LAUNCH POINT. NOT VISIBLE.



SITE SECTION



VIEW ANALYSIS I



VIEWPOINT REFERENCE PLAN

SCALE 1" = 160'-0"



VIEWPOINT LOCATION #1, DRONE STATIONED AT 55'-0" ABOVE LAUNCH POINT (AT TOP OF PROPOSED ROOF). NOT VISIBLE.



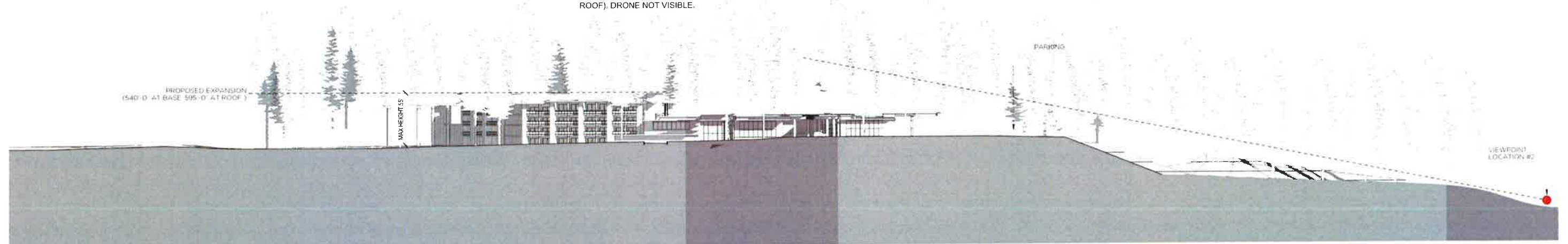
VIEWPOINT LOCATION #1, DRONE STATIONED AT 100'-0" ABOVE LAUNCH POINT. DRONE VISIBLE, HOTEL WILL NOT BE VISIBLE



VIEWPOINT LOCATION #2, DRONE STATIONED AT 55'-0" ABOVE LAUNCH POINT (AT TOP OF PROPOSED ROOF). DRONE NOT VISIBLE.



VIEWPOINT LOCATION #2, DRONE STATIONED AT 100'-0" ABOVE LAUNCH POINT. DRONE NOT VISIBLE.



SITE SECTION

SCALE 1" = 50'-0"



VIEW ANALYSIS II

APPENDIX B
THE SALISH LODGE AND SPA EXPANSION

PR/PCI MASTER PLAN · APRIL 2, 2018