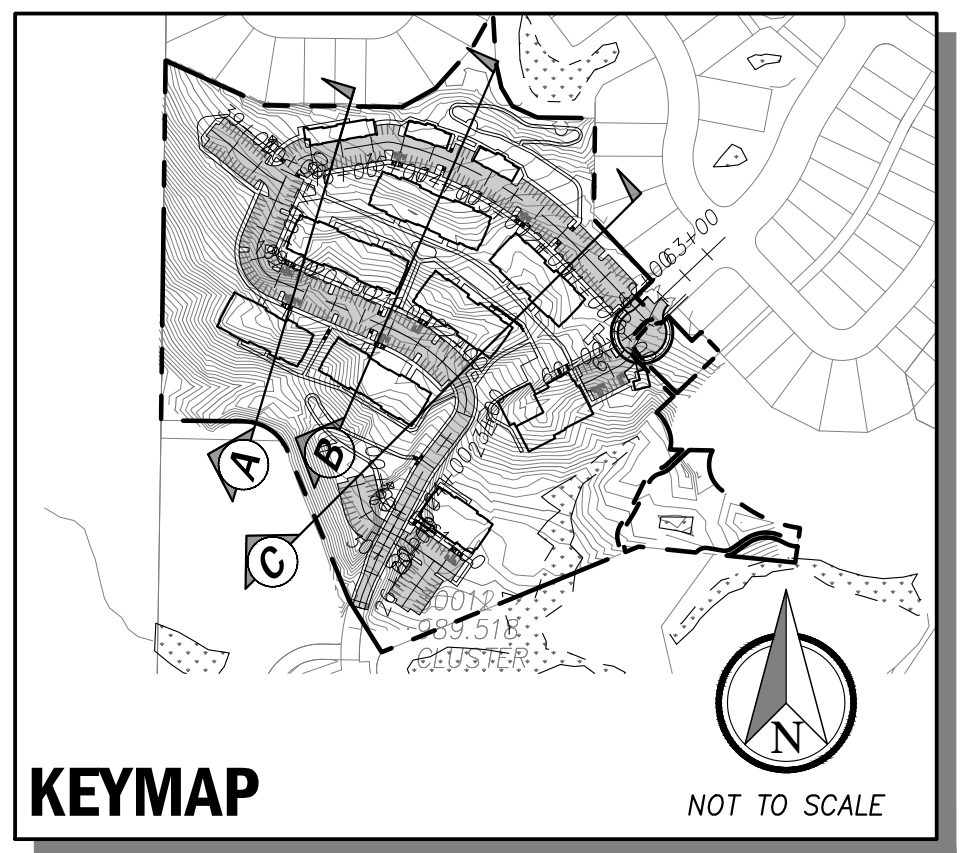
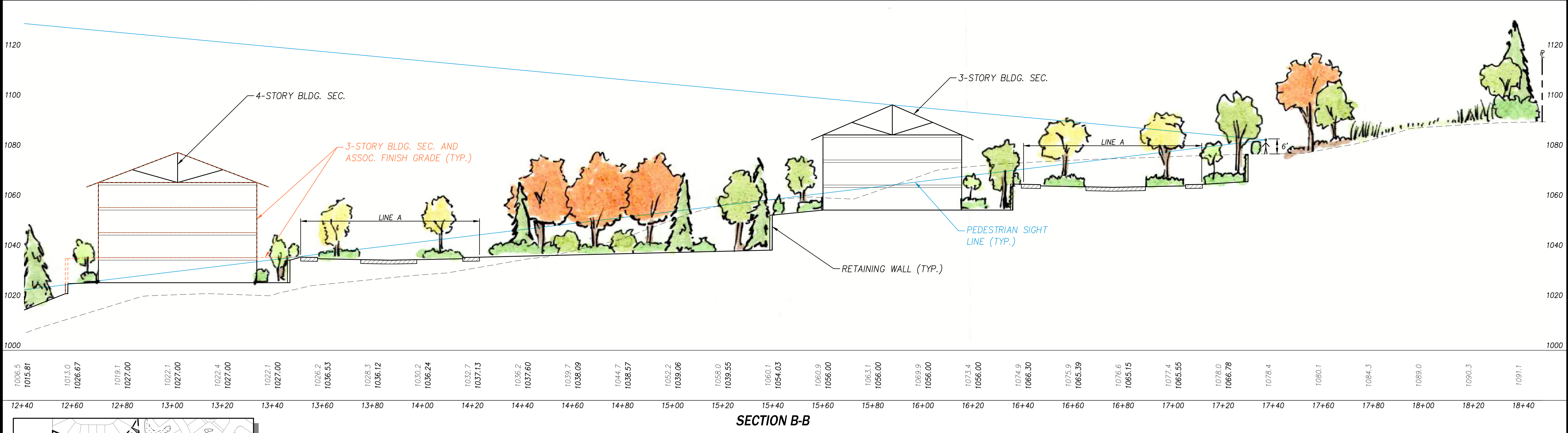
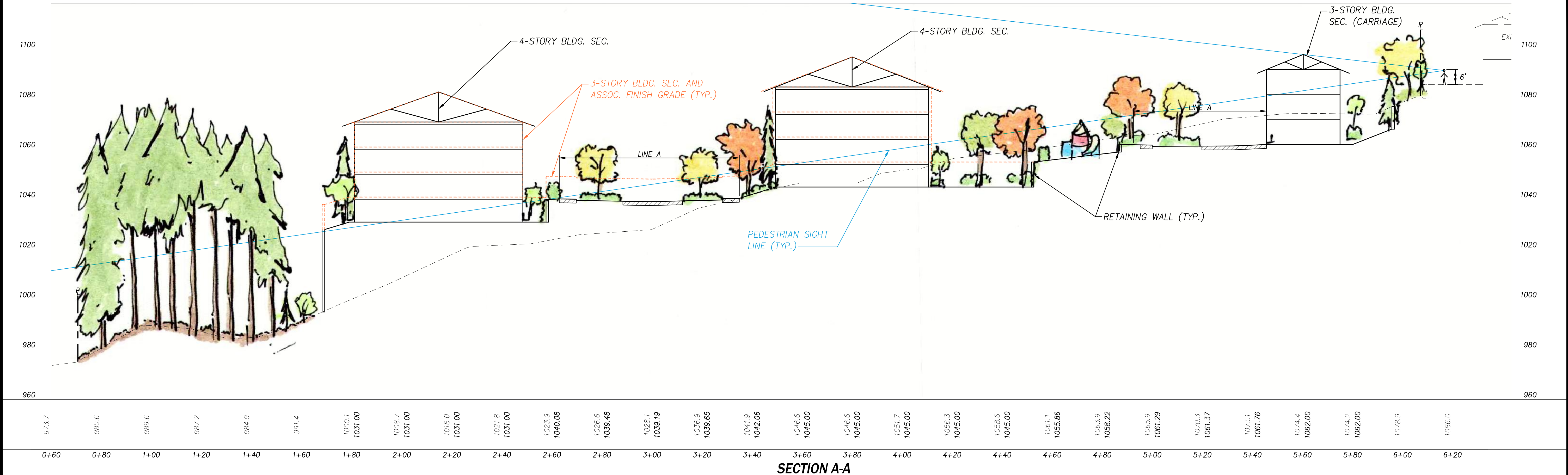


OTOP241636  
 CORD241636  
 CS1241636  
 TBLOCK

SEC. 35, TWP 24 N, R7E W.M.



P:\projects\0024\16036\Draw\Exhibits\Appeal\hearing\PS1.01.dwg  
 11/8/2017 12:10 PM MATT HOUGH

NO.	DATE	REVISION	BY	CHK.
1	11/8/17	CONSISTENCY REVIEW - APPEAL HEARING	KTF	MSH

PANORAMA APARTMENTS  
 CONSISTENCY REVIEW  
 EXHIBIT E CONCEPTUAL SITE SECTION  
 CITY OF SNOQUALMIE KING COUNTY, WA

CLIENT  
 DEVCO INC  
 10900 NE 8TH STREET  
 SUITE 1200  
 BELLEVUE, WA 98004  
 PHONE: (425) 453-9551

**CPH**  
 CONSULTANTS  
 Site Planning • Civil Engineering  
 Land Use Consulting • Project Management  
 14331 Willows Rd. NE, Suite 1200  
 Redmond, WA 98052  
 Phone: (425) 285-2300 | Fax: (425) 285-2389  
 www.cphconsultants.com



PROJECT NO.  
 0024-16-036  
 DRAWING  
 P5.01  
 SHEET 5 OF 6

Copyright © 2017 CPH Consultants, LLC. All Rights Reserved.